

# COLLECTION 2021/2022



# CAST IRON WOOD STOVES



## Cast iron wood stove

- **ECODESIGN**
- Designed for surface areas of 75 to 180 m<sup>2</sup>
- Nominal power output 9kW (6-16kW)
- Designed for wood logs of 60 cm (62 cm max.)
- Efficiency 77%
- Double combustion
- Removable ashpan
- Back steel protection plate
- Removable cast iron ashgrid
- Smoke exit of 150 mm
- Top or rear smoke exit
- External air intake (diam. 7,5 cm)
- Dimensions: 70x81x43,5cm





# UDO

Cast iron wood stove

taurusgroup  
**SUPRA** 

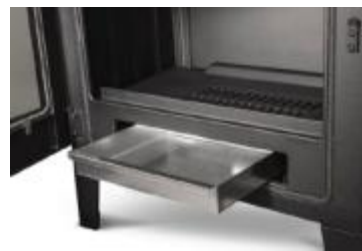
## Cast iron wood stove with wood legs

- **ECODESIGN**
- Designed for surface areas of 75 to 180 m<sup>2</sup>
- Nominal power output 9kW (6-16kW)
- Designed for wood logs of 60 cm (62 cm max.)
- Efficiency 77%
- Double combustion
- Removable ashpan
- Back steel protection plate
- Removable cast iron ashgrid
- Smoke exit of 150 mm
- Top or rear smoke exit
- External air intake (diam. 7,5 cm)
- Dimensions: 70x87x42,3cm



## Cast iron wood stove with log storage compartment (made of steel)

- ECODESIGN
- Designed for surface areas of 75 to 180 m<sup>2</sup>
- Nominal power output 9kW (6-16kW)
- Designed for wood logs of 60 cm (62 cm max.)
- Efficiency 77%
- Double combustion
- Removable ashpan
- Back steel protection plate
- Removable cast iron ashgrid
- Smoke exit of 150 mm
- Top or rear smoke exit
- External air intake (diam. 7,5 cm)
- Dimensions: 72,5x81,5x44,5 cm



# ARIO

Cast iron wood stove

taurusgroup  
**SUPRA** 

## Space saving cast iron stove

- ECODESIGN
- Designed for surface areas of 70 to 170 m<sup>2</sup>
- Nominal power output 7kW (5-15kW)
- Designed for wood logs of 50 cm (55 cm max.)
- Efficiency 78%
- Double combustion
- Removable ashpan
- Back steel protection plate
- Removable cast iron ashgrid
- Smoke exit of 150 mm
- Top or rear smoke exit
- External air intake (diam. 7,5 cm)
- Dimensions: 62,5x67,5x43,5 cm



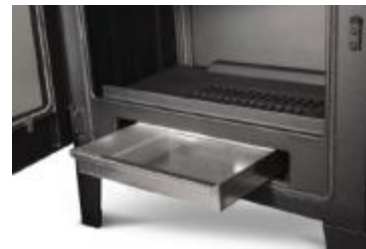
# GENO

Cast iron wood stove

taurus group  
**SUPRA**

## Space saving cast iron stove

- ECODESIGN
- Designed for surface areas of 70 to 170 m<sup>2</sup>
- Nominal power output 7kW (5-15kW)
- Designed for wood logs of 50 cm (55 cm max.)
- Efficiency 78%
- Double combustion
- Removable ashpan
- Back steel protection plate
- Removable cast iron ashgrid
- Smoke exit of 150 mm
- Top or rear smoke exit
- External air intake (diam. 7,5 cm)
- Dimensions: 62,5x74,5x47cm



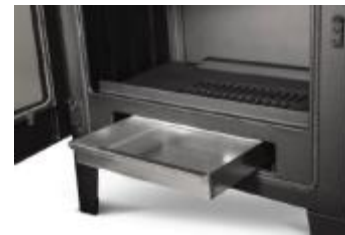
# GENO RABAISSÉ

Cast iron wood stove

taurusgroup  
**SUPRA**

## Cast iron stove with low support legs

- ECODESIGN
- Designed for surface areas of 70 to 170 m<sup>2</sup>
- Nominal power output 7kW (5-15kW)
- Designed for wood logs of 50 cm (55 cm max.)
- Efficiency 78%
- Double combustion
- Removable ashpan
- Back steel protection plate
- Removable cast iron ashgrid
- Smoke exit of 150 mm
- Top or rear smoke exit
- External air intake (diam. 7,5 cm)
- Dimensions: 62.5x53.5x47cm





# AIKO

Cast iron wood stove

taurus group  
**SUPRA**

## Cast iron wood stove with wood legs

- ECODESIGN
- Designed for surface areas of 70 to 170 m<sup>2</sup>
- Nominal power output 7kW (5-15kW)
- Designed for wood logs of 50 cm (55 cm max.)
- Efficiency 78%
- Double combustion
- Removable ashpan
- Back steel protection plate
- Removable cast iron ashgrid
- Smoke exit of 150 mm
- Top or rear smoke exit
- External air intake (diam. 7,5 cm)
- Dimensions: 62,5x67,5x43,5 cm



# PACCO

Cast iron wood stove

taurusgroup  
**SUPRA**

## Cast iron stove with rounded front door

- ECODESIGN
- Designed for surface areas of 70 to 170 m<sup>2</sup>
- Nominal power output 10kW (6-14kW)
- Designed for wood logs of 50 cm (58 cm max.)
- Efficiency 77%
- Double combustion
- Removable ashpan
- Back steel protection plate
- Removable cast iron ashgrid
- Smoke exit of 150 mm
- Top smoke exit
- Dimensions: 70x72x43cm



# PACCO HAUT

Cast iron wood stove

taurusgroup  
**SUPRA**

## Cast iron stove with rounded front door with large log storage compartment

- ECODESIGN
- Designed for surface areas of 70 to 170 m<sup>2</sup>
- Nominal power output 10kW (6-14kW)
- Designed for wood logs of 50 cm (58 cm max.)
- Efficiency 77%
- Double combustion
- Removable ashpan
- Back steel protection plate
- Removable cast iron ashgrid
- Smoke exit of 150 mm
- Top smoke exit
- Dimensions: 70x87x46cm



# PACCO SUR PIED

Cast iron wood stove

taurusgroup  
**SUPRA**

## Cast iron stove with rounded front door set on a support leg

- ECODESIGN
- Designed for surface areas of 70 to 170 m<sup>2</sup>
- Nominal power output 10kW (6-14kW)
- Designed for wood logs of 50 cm (58 cm max.)
- Efficiency 77%
- Double combustion
- Removable ashpan
- Back steel protection plate
- Removable cast iron ashgrid
- Smoke exit of 150 mm
- Top smoke exit
- Dimensions: 70x82x46cm





# PACCO BÛCHER

Cast iron wood stove

taurusgroup  
**SUPRA**

## Cast iron stove with rounded front door with large log storage compartment

- ECODESIGN
- Designed for surface areas of 70 to 170 m<sup>2</sup>
- Nominal power output 10kW (6-14kW)
- Designed for wood logs of 50 cm (58 cm max.)
- Efficiency 77%
- Double combustion
- Removable ashpan
- Back steel protection plate
- Removable cast iron ashgrid
- Smoke exit of 150 mm
- Top smoke exit
- Dimensions: 70x87x43cm



# KYO

Cast iron wood stove

taurusgroup  
**SUPRA** 

## Cast iron stove with wood legs

- ECODESIGN
- Designed for surface areas of 70 to 170 m<sup>2</sup>
- Nominal power output 10kW (6-14kW)
- Designed for wood logs of 50 cm (58 cm max.)
- Efficiency 77%
- Double combustion
- Removable ashpan
- Back steel protection plate
- Removable cast iron ashgrid
- Smoke exit of 150 mm
- Top smoke exit
- Dimensions: 70x90,5x43cm



# ZOÉ

Cast iron wood stove

taurusgroup  
**SUPRA**

## Vertical cast iron stove with large view on the flames

- Designed for surface areas of 120 m<sup>2</sup>
- Nominal power output 10kW (7-14kW)
- Designed for wood logs 33cm (horizontal loading) or 50cm (vertical loading)
- Efficiency 76%
- Double combustion
- Removable ashpan
- Back steel protection plate
- Removable cast iron ashgrid
- Smoke exit of 150 mm
- Top or rear smoke exit
- Dimensions: 48x112,5x46,5cm

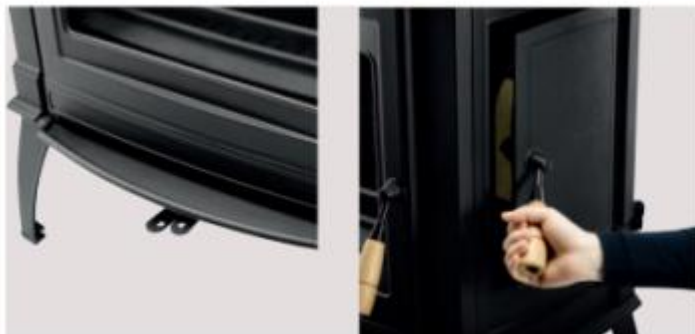


# VERCORS 3

Cast iron wood stove

taurusgroup  
SUPRA

- Fully made of cast iron, smooth heat diffusion
- Easy loading thanks to its side door
- Cold grip handles, made of wood
- Nominal power output – 10 kW
- Efficiency 76%
- Vermiculite internal lining
- Designed for logs up to 50 cm
- Double combustion
- Smoke exit 150 mm
- Accessible ashpan in operation
- Dimensions : 72,5 x 81,5 x 44,5 cm



*\*Does not comply with Ecodesign 2022 directives*



# STEEL WOOD STOVES



# CHLOÉ

Hermetic steel wood stove

## Vertical rounded Steel external surround

- ECODESIGN
- Designed for surface areas of 50 to 120 m<sup>2</sup>
- Nominal power output 6kW (3-10kW)
- Designed for wood logs of 38cm (horizontal loading) and 50cm (vertical loading)
- Efficiency 80%
- Double combustion
- Vermiculite internal lining
- Removable ashpan
- Removable cast iron ashgrid
- Smoke exit of 150 mm
- Top or rear smoke exit
- External air intake (diam. 7,5 cm)
- Dimensions: 49 (d) x 128,5cm



taurus group  
**SUPRA**



# CHLOÉ SUR PIED

Hermetic steel wood stove

taurusgroup  
**SUPRA**

## Vertical rounded stove, support leg

- ECODESIGN
- Designed for surface areas of 50 to 120 m<sup>2</sup>
- Nominal power output 6kW (3-10kW)
- Designed for wood logs of 38cm (horizontal loading) and 50cm (vertical loading)
- Efficiency 80%
- Double combustion
- Vermiculite internal lining
- Removable ashpan
- Removable cast iron ashgrid
- Smoke exit of 150 mm
- Top or rear smoke exit
- External air intake (diam. 7,5 cm)
- Dimensions: 49 (d) x 128,5cm



# MAUD

Hermetic steel wood stove

taurusgroup  
**SUPRA** 

## Vertical rounded stove with large combustion chamber

- ECODESIGN
- Designed for surface areas of 120 m<sup>2</sup>
- Nominal power output 9kW (6-14kW)
- Designed for wood logs of 38cm (horizontal loading) and 50cm (vertical loading)
- Efficiency 75%
- Double combustion
- Vermiculite internal lining
- Removable ashpan
- Removable cast iron ashgrid
- Smoke exit of 150 mm
- Top or rear smoke exit
- External air intake (diam. 9,5 cm)
- Dimensions: 56x137,5cm





# NEW MODELS 2021-2022



# JACCO BÛCHER

Steel wood stove with log storage compartment

taurusgroup  
SUPRA

- ECODESIGN
- Designed for surface areas of 50 to 80 m<sup>2</sup>
- Airtight appliance
- Nominal power output 4,8kW (4-6kW)
- Designed for wood logs of 25 cm
- Efficiency 77,6%
- A + energy label
- Vermiculite internal lining
- Double combustion
- Removable ashpan
- Removable cast iron ashgrid
- Smoke exit of 150 mm
- Top or rear smoke exit
- External air intake (diam.10cm)
- Dimensions: 41,7x94,2x41,7 cm



# LARRY BÛCHER

Steel wood stove with log storage compartment

taurusgroup  
SUPRA

- ECODESIGN
- Designed for surface areas of 80 to 100 m<sup>2</sup>
- Airtight appliance
- Nominal power output 8,5kW (6-12W)
- Designed for wood logs of 50 cm
- Efficiency 75,4%
- A+ Energy label
- Vermiculite internal lining
- Double combustion
- Removable ashpan
- Removable cast iron ashgrid
- Smoke exit of 150 mm
- Top or rear smoke exit
- External air intake (diam.10cm)
- Dimensions: 78,2x78,3x37,1cm



# LASLO BÛCHER

Steel wood stove with log storage compartment

taurusgroup  
SUPRA

- ECODESIGN
- Designed for surface areas of 80 to 100 m<sup>2</sup>
- Airtight appliance
- Nominal power output 7,7kW (6-12W)
- Designed for wood logs of 50 cm
- Efficiency 80,1%
- A+ Energy label
- Vermiculite internal lining
- Double combustion
- Removable ashpan
- Removable cast iron ashgrid
- Smoke exit of 150 mm
- Top or rear smoke exit
- External air intake (diam.10cm)
- Dimensions: 78,2x75x43,5cm



# TALMA TRI-VISION

Steel wood stove

taurusgroup  
SUPRA

- ECODESIGN
- Designed for surface areas of 50 to 150 m<sup>2</sup>
- Airtight appliance
- Nominal power output 9,1kW (6-10kW)
- Designed for wood logs of 50 cm
- Efficiency 80%
- A+ Energy label
- Vermiculite internal lining
- Double combustion
- Removable ashpan
- Removable cast iron ashgrid
- Smoke exit of 150 mm
- Top or rear smoke exit
- External air intake (diam.10cm)
- Dimensions: 45.8x105.8x43.8cm





# ANAYA TRI-VISION

Steel wood stove

- ECODESIGN
- Designed for surface areas of 50 to 150 m<sup>2</sup>
- Airtight appliance
- Nominal power output 9,1kW (6-10kW)
- Designed for wood logs of 30 cm
- Efficiency 80%
- A+ Energy label
- Vermiculite internal lining
- Double combustion
- Removable ashpan
- Removable cast iron ashgrid
- Smoke exit of 150 mm
- Top or rear smoke exit
- External air intake (diam.10cm)
- Dimensions: 45.8x105.8x43.8cm

taurusgroup  
**SUPRA** 



# EMI 100 CAISSON

Hermetic steel wood stove

taurusgroup  
SUPRA

- ECODESIGN
- Designed for surface areas of 270m<sup>3</sup>
- Nominal power output 8,9 kW (5,9-12,9 kW)
- Designed for wood logs of 80 cm
- Efficiency 80,8%
- Triple combustion
- Steel & vermiculite internal lining
- Removable ashpan
- Removable cast iron ashgrid
- Smoke exit of 150 mm
- Top smoke exit
- External air intake (8 cm diameter)
- Dimensions: 109.1x87.3x46.8cm



# ELIDA 80 CAISSON

Hermetic steel wood stove

- ECODESIGN
- Designed for surface areas of 220m<sup>2</sup>
- Nominal power output 7,2 kW
- Designed for wood logs of 60cm
- Efficiency 78,9%
- Triple combustion
- Steel & vermiculite internal lining
- Removable ashpan
- Removable cast iron ashgrid
- Smoke exit of 150 mm
- Top smoke exit
- External air intake (8 cm diameter)
- Dimensions: 79,6x85,4x46,3cm



# ELIDA 80 SUR PIED

Hermetic steel wood stove

taurusgroup  
**SUPRO**

- ECODESIGN
- Designed for surface areas of 220m<sup>2</sup>
- Nominal power output 7,2 kW
- Designed for wood logs of 60cm
- Efficiency 78,9%
- Triple combustion
- Steel & vermiculite internal lining
- Removable ashpan
- Removable cast iron ashgrid
- Smoke exit of 150 mm
- Top smoke exit
- External air intake (8 cm diameter)
- Dimensions: 79,6x85,4x46,3cm



# ORNA 64 CAISSON

Hermetic steel wood stove

taurusgroup  
**SUPRO**

- Designed for surface areas of 210m<sup>3</sup>
- Nominal power output 6,7 kW (3,7-10,7 kW)
- Designed for wood logs of 50cm
- Efficiency 80,7%
- Triple combustion
- Steel & vermiculite internal lining
- Removable ashpan
- Removable cast iron ashgrid
- Smoke exit of 150 mm
- Top smoke exit
- External air intake (8 cm diameter)
- Dimensions: 64x69,5x40cm





# ORNA 64 L CAISSON

Hermetic steel wood stove

taurusgroup  
SUPRA

- Designed for surface areas of 210m<sup>2</sup>
- Nominal power output 6,7 kW (3,7-10,7 kW)
- Designed for wood logs of 50cm
- Efficiency 80,7%
- Triple combustion
- Steel & vermiculite internal lining
- Removable ashpan
- Removable cast iron ashgrid
- Smoke exit of 150 mm
- Top smoke exit
- External air intake (8 cm diameter)
- Dimensions: 64x69,5x40cm



# ORNA 64 MURAL

Hermetic steel wood stove

taurusgroup  
**SUPRA**

- Designed for surface areas of 210m<sup>3</sup>
- Nominal power output 6,7 kW (3,7-10,7 kW)
- Designed for wood logs of 50cm
- Efficiency 80,7%
- Triple combustion
- Steel & vermiculite internal lining
- Removable ashpan
- Removable cast iron ashgrid
- Smoke exit of 150 mm
- Top smoke exit
- External air intake (8 cm diameter)
- Dimensions: 64x69,5x40cm



# INAYA CAISSON

Hermetic steel wood stove

taurusgroup  
**SUPRA**

- Designed for surface areas of 380m<sup>2</sup>
- Nominal power output 12,4 kW (9,4-16,4 kW)
- Designed for wood logs of 50cm
- Efficiency 75,3%
- Double combustion
- Steel & vermiculite internal lining
- Removable ashpan
- Removable cast iron ashgrid
- Smoke exit of 150 mm
- Top smoke exit
- External air intake (8 cm diameter)
- Dimensions: 65x100x46,5cm



# INAYA CAISSON LAT

Hermetic steel wood stove

taurusgroup  
**SUPRO**

- Designed for surface areas of 380m<sup>2</sup>
- Nominal power output 12,4 kW (9,4-16,4 kW)
- Designed for wood logs of 50cm
- Efficiency 75,3%
- Double combustion
- Steel & vermiculite internal lining
- Removable ashpan
- Removable cast iron ashgrid
- Smoke exit of 150 mm
- Top smoke exit
- External air intake (8 cm diameter)
- Dimensions: 65x100x46,5cm



# ORVAL

Hermetic steel wood stove

- Designed for surface areas of 270m<sup>2</sup>
- Nominal power output 8,7 kW (5,7-12,7 kW)
- Designed for wood logs of 50cm
- Efficiency 80,7%
- Avec triple combustion
- Steel & vermiculite internal lining
- Removable ashpan
- Removable cast iron ashgrid
- Smoke exit of 150 mm
- Top smoke exit
- External air intake (8 cm diameter)
- Dimensions: 60.5x100.8x49cm

taurusgroup  
**SUPRO**





# THAÏS TRI-VISION

Hermetic steel wood stove

- Designed for surface areas of 240m<sup>2</sup>
- Rounded glass on 3 sides
- Nominal power output 8kW (5-12kW)
- Designed for wood logs of chauffage 50cm
- Efficiency 78,5%
- Avec triple combustion
- Steel & vermiculite internal lining
- Removable ashpan
- Removable cast iron ashgrid
- Smoke exit of 150 mm
- Top smoke exit
- External air intake (8 cm diameter)
- Dimensions: 50x99x44,5cm

taurusgroup  
**SUPRO**



# TOMA

Steel wood stove with oven

taurusgroup  
**SUPRO**

- Designed for surface areas of 220m<sup>2</sup>
- Top oven / cooking compartment
- Nominal power output 7,1 kW (4,1-11,1 kW)
- Designed for wood logs of 50cm
- Efficiency 80,7%
- Triple combustion
- Cast iron door
- Steel internal lining
- Removable ashpan
- Removable cast iron ashgrid
- Smoke exit of 150 mm
- Rear smoke exit
- Dimensions: 64,2x77,2x48,1cm



# STEEL WOOD INSERTS



# NÉO 67

Steel hermetic firebox insert

taurusgroup  
**SUPRA** 

## Wood insert with 67 cm front door width.

- Designed for surface areas of 65 to 160 m<sup>2</sup>
- Nominal power output 8kW (5-14kW)
- Designed for wood logs of 50 cm (55 cm max.)
- Efficiency 80%
- Double combustion
- Cast iron internal lining
- Removable ashpan
- Removable cast iron ashgrid
- Smoke exit of 150 mm
- Top smoke exit
- External air intake (diam. 7,5 cm)
- Dimensions: 71x59,5x48cm



•Optional warm air nozzles of 4 x 125 mm or 2 x 150 mm.

•Optional turbine set



# NÉO 76

Steel hermetic firebox insert

## Wood insert with 76 cm front door width.

- Designed for surface areas of 80 to 200 m<sup>2</sup>
  - Nominal power output 10kW (7-14kW)
  - Designed for wood logs of 50 cm (60 cm max.)
  - Efficiency 77% / 78%
  - Double combustion
  - Cast iron internal lining
  - Removable ashpan
  - Removable cast iron ashgrid
  - Smoke exit of 150 mm
  - Top smoke exit
  - External air intake (diam. 7,5 cm)
  - Dimensions: 80x70x48cm
- 
- Optional warm air nozzles of 4 x 125 mm or 2 x 150 mm.
  - Optional turbine set





# NÉO 76 16/9

Steel hermetic firebox insert

## Wood insert with 76 cm front door width – height 55 cm

- Designed for surface areas of 80 to 200 m<sup>2</sup>
  - Nominal power output 10kW (7-14kW)
  - Designed for wood logs of 50 cm (60 cm max.)
  - Efficiency 77% / 78%
  - Double combustion
  - Cast iron internal lining
  - Removable ashpan
  - Removable cast iron ashgrid
  - Smoke exit of 150 mm
  - Top smoke exit
  - External air intake (diam. 7,5 cm)
  - Dimensions: 80x55x48cm
- 
- Optional warm air nozzles of 4 x 125 mm or 2 x 150 mm.
  - Optional turbine set



*\*Does not comply with Ecodesign 2022 directives*

# NÉO 100

Steel hermetic firebox insert

taurusgroup  
**SUPRA**

## Wood insert with 100 cm front door width

- Designed for surface areas of 80 to 200 m<sup>2</sup>
  - Nominal power output 10kW (7-14kW)
  - Designed for wood logs of 50 cm (60 cm max.)
  - Efficiency 80 %
  - Double combustion
  - Steel internal lining
  - Double smoke deflectors – stainless steel / vermiculite
  - Removable cast iron ashgrid
  - Smoke exit of 180 mm
  - Top smoke exit
  - External air intake (diam. 7,5 cm)
  - Dimensions: 104 x 59,5 x 48,5 cm
- 
- Optional warm air nozzles of 4 x 125 mm or 2 x 150 mm.
  - Optional turbine set
  - Optional warm air distribution set



*\*Does not comply with Ecodesign 2022 directives*

# NOÉ 110

Steel hermetic firebox insert

taurusgroup  
**SUPRA**

- Designed for surface areas of 270m<sup>2</sup>
- Nominal power output 8,9 kW (5,9-12,9 kW)
- Designed for wood logs of 80cm
- Efficiency 80,8%
- Triple combustion
- Steel & vermiculite internal lining
- Removable ashpan
- Removable cast iron ashgrid
- Smoke exit of 150 mm
- Top smoke exit
- External air intake (8 cm diameter)
- Dimensions: 112x62,7x47cm



# NOÉ 110 T

Steel hermetic firebox insert

taurusgroup  
**SUPRA** 

- Designed for surface areas of 270m<sup>2</sup>
- Nominal power output 8,9 kW (5,9-12,9 kW)
- Turbine set included
- Designed for wood logs of 80cm
- Efficiency 80,8%
- Triple combustion
- Steel & vermiculite internal lining
- Removable ashpan
- Removable cast iron ashgrid
- Smoke exit of 150 mm
- Top smoke exit
- External air intake (8 cm diameter)
- Dimensions: 112x62,7x47cm



# UNIVERS 201 B PACK PN

Steel firebox

taurusgroup  
**SUPRA**

- Designed for surface areas of 80 to 200 m<sup>2</sup>
- Nominal power output 13 kW (6 - 16 kW)
- **Lift up door system**
- Warm air distribution set and support legs included in the package
- Designed for wood logs of 50cm
- Efficiency 72,5%
- Cast iron internal lining
- Removable ashpan
- Stainless steel smoke deflector
- Smoke exit of 200 mm
- External air intake (7,5 cm diameter)
- Dimensions: 76 x 178 x 58 cm



*\*Does not comply with Ecodesign 2022 directives*





**CAST IRON INSERTS**

# TERTIO 76

Cast iron wood insert

## Cast iron wood insert with 76 cm front door

- Designed for surface areas of 75 to 180 m<sup>2</sup>
- Nominal power output 9,5kW (7-14kW)
- Designed for wood logs of 50cm (52cm max.)
- Efficiency 75%
- Cast iron internal lining
- Removable cast iron ashgrid
- Reversible hearth plate
- Smoke exit of 200 mm
- Top smoke exit
- Dimensions: 76x61,5x48cm



- Optional warm air nozzles of 4 x 125 mm
- Optional turbine set



reversible hearth plate – 2 decorative backgrounds

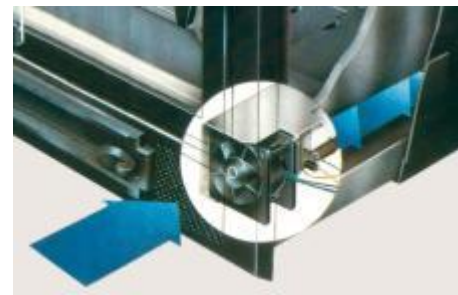
# TURBO 634

Cast iron insert

taurusgroup  
**SUPRA**

## Cast iron insert with 63 cm door width / ventilation included

- Designed for surface areas of 50 to 120 m<sup>2</sup>
- Nominal power output 6kW (3-10kW)
- Designed for logs of 45 cm (50 cm max.)
- Efficiency 78%
- Cast iron internal lining
- Removable cast iron ashgrid
- **Smoke flue not required**
- Turbine set included
- Top smoke exit
- Dimensions: 63x50x41,5cm





# ASTRA 2

Cast iron firebox

- Designed for surface areas of 120 m<sup>2</sup>
- Nominal power output 10 kW
- Fully made of cast iron, smooth heat diffusion
- Designed for logs of 50 cm
- Efficiency 77,5%
- Cast iron internal lining
- Large ashpan
- Stainless steel smoke deflector
- External air intake – 7,5 cm diam.
- Large smoke throat
- Smoke exit of 180 mm
- Beam front protection plate (included)
- Warm air distribution set (optional)
- Dimensions: 67 x 72 x 44 cm



*\*Does not comply with Ecodesign 2022 directives*

# PELLET STOVES





# LENI 8 OPTIMA BLANC

# LENI 8 OPTIMA GRIS

Hermetic steel pellet stove

- Designed for surface areas of 65 to 160 m<sup>2</sup>
- Power output range : (3-8kW)
- Pellet loading capacity : 23kg
- Autonomy from 12 to 32 h
- Efficiency 92%
- Cast iron top and door
- Safety system AGS – secured lighting
- Stainless steel burner
- Possible connection to concentric flue
- Dimensions: 51x110x59cm
- Remote control included
- Pellet shovel included
- Comes in white or grey color



taurusgroup  
**SUPRA**

<https://www.youtube.com/watch?v=pqepyt-7Z5U>



Pelle à granulés incluse



# ORPHÉE 6 BLANC

# ORPHÉE 6 NOIR

Non hermetic steel pellet stove

- Designed for surface areas of 153 m<sup>3</sup>
- Power output range : (3,2-6,1kW)
- Pellet loading capacity : 11kg
- Autonomy from 8 to 16 h
- Efficiency 92-95%
- Steel external surround
- Cast iron burner
- Smoke exit of 80 mm
- Dimensions: 44,5x80,5x53,3cm
- Remote control included

\* Comes in 2 versions : black and white color



# ORPHÉE 8 BLANC

# ORPHÉE 8 NOIR

Non hermetic steel pellet stove

- Designed for surface areas of 182 m<sup>3</sup>
- Power output range : (3-8kW)
- Pellet loading capacity : 15kg
- Autonomy from 8,3 to 22 h
- Efficiency 91,3-96%
- Steel external surround
- Cast iron burner
- Smoke exit of 80 mm
- Dimensions: 50,7x87,8x54cm

\* Comes in 2 versions : black and white color



# ORPHÉE 10 BLANC

# ORPHÉE 10 NOIR

Non hermetic steel pellet stove

- Designed for surface areas of 227 m<sup>3</sup>
- Power output range : (3,5-10kW)
- Pellet loading capacity : 20kg
- Autonomy from 8,7 to 26 h
- Efficiency 91,4-96%
- Steel external surround
- Cast iron burner
- Smoke exit of 80 mm
- Dimensions: 50,7x103,5x54cm

\* Comes in 2 versions : black and white color



# ORPHÉE 12 BLANC

# ORPHÉE 12 NOIR

Stove with warm air distribution option

- Designed for surface areas of 270 m<sup>3</sup>
- Power output range : (3,9-11,9kW)
- Pellet loading capacity : 30kg
- Autonomy from 11,1 to 33,3 h
- Efficiency 91,4-96%
- Steel external surround
- Cast iron burner
- Smoke exit of 80 mm
- Dimensions: 55,4x119,7x62,8cm

\* Comes in 2 versions : black and white color  
**OPTIONAL WARM AIR DISTRIBUTION SET**

